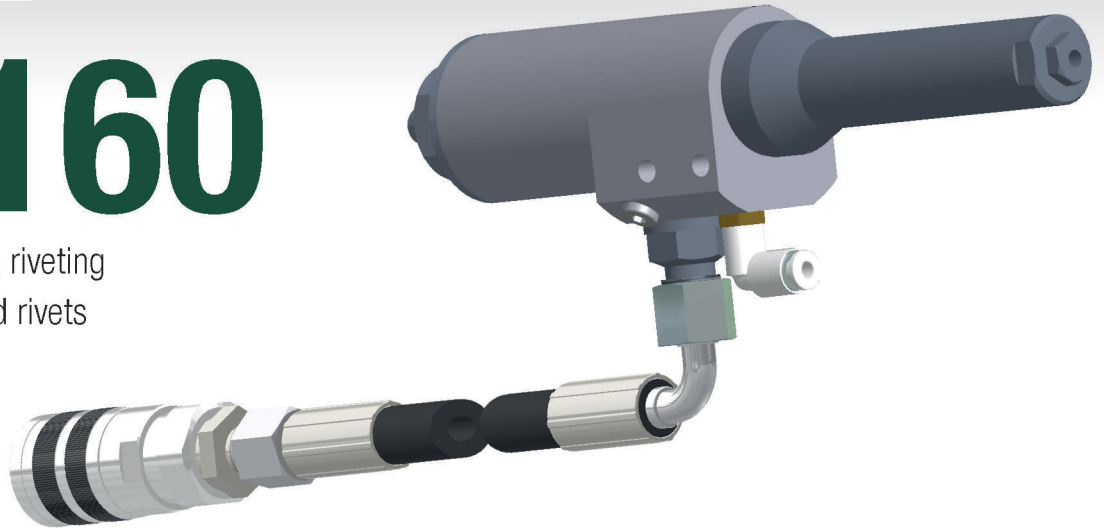


Part No. 99-0101

HH 160

Hydraulic single-acting riveting head for installing blind rivets from 4 to 8 mm



Scope of use:

Ø of the rivet	3 / 3.2	4	4.8 / 5	6	6.4*	8
Aluminium, Copper, Brass		✓	✓	✓	✓	✓
Steel		✓	✓	✓	✓	
Stainless		✓	✓	✓	✓	

Nosepieces included:

				✓	
--	--	--	--	---	--

* structural rivets: TIBULB, M-LOCK, MAGNA-BULB, HUCKLOCK etc.

Description:

- for installation of structural rivets
- high working stroke and pulling force
- high-performance industrial riveting head for operation on 3 shifts
- connection to power unit by quick coupling
- easy maintenance
- easy removal of spent mandrels by hose

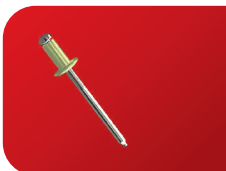
Technical parameters:

Model	HH 160
Pulling Force up to	18.2 kN / 35 MPa*
Working Stroke	26 mm*
Weight	2.1 kg*
Work Cycle up to	20 cycles / min*
Dimensions (l×w×h)	292 × 40 × 89 mm
Max Oil Pressure	35 MPa
Volume of Head	0,016 l
Hose Connection for Mandrels	Ø 10 mm*
Air Consumption for Exhaust Process	20 l / rivet
Working Air Pressure for Engine	5–7 bar
Hose Connection for Exhaust	Ø 4 mm (M5)

* depends on power unit, size and type of rivet

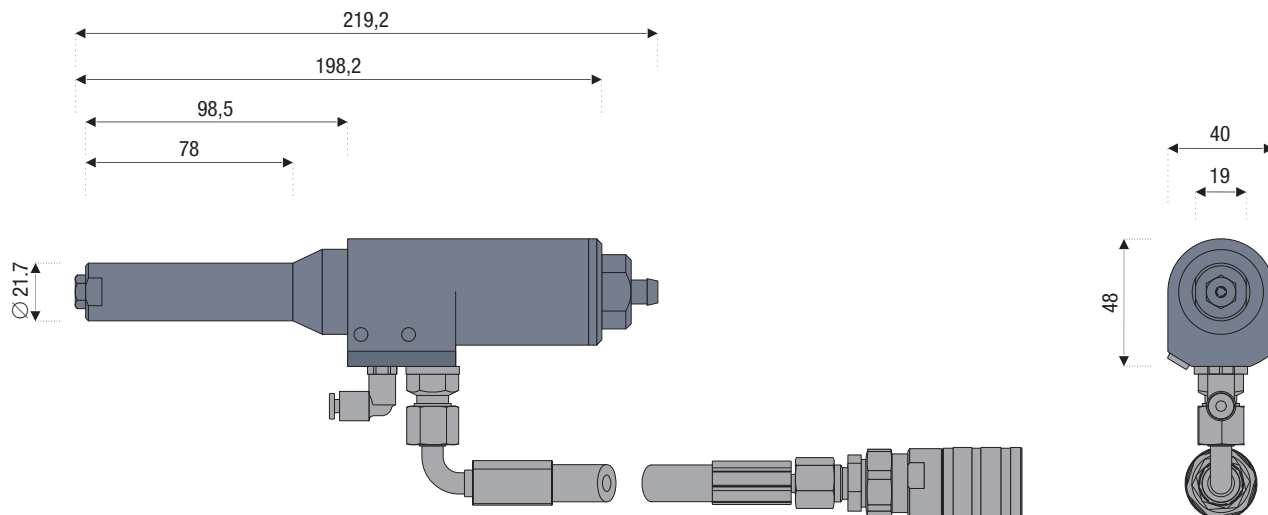


RHP P2



Dimensions of tool:

HH 160



Standard accessories:

Description	Part No.
Nosepiece 4	87-0022
Nosepiece 5	87-0023
Nosepiece 6	87-0024
Nosepiece 6.4	87-0025
Jaws (3-piece)	87-0051
Spring and Jaws Pusher	87-0126
Jaw Case	87-0441

Optional accessories:

Description	Part No.
Rebuild Kit Gr. Rivets 0,8	87-0195
Hydraulic Oil - 1 Litre	87-0188
RHP P2	99-0100